

Uputstvo za uvođenje certifikata u Internet Explorer

Za potrebe potpisa računa certifikatom, potrebno je preuzeti certifikat i pripremiti ga na opisan način.

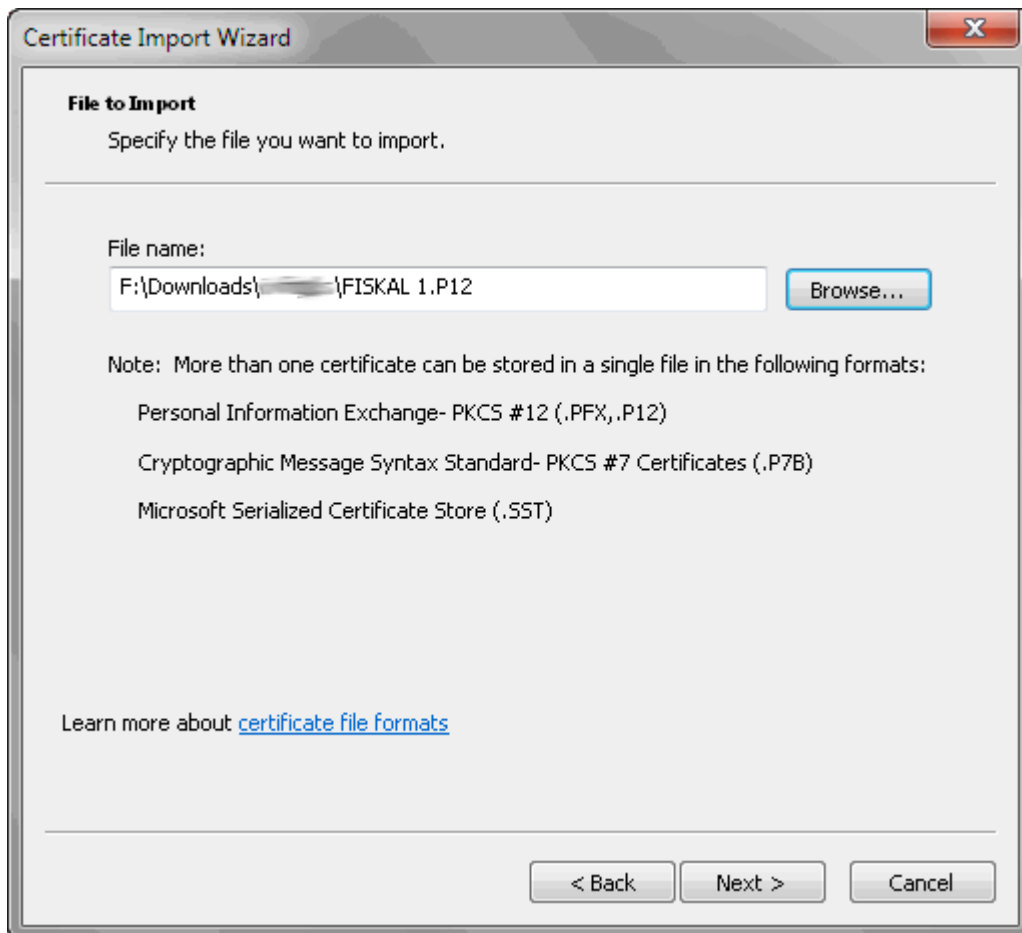
Importiranje preuzetog P12 certifikata u Internet Explorer

Otvoriti Internet Explorer, pa u izborniku odabrati Internet Options, Content, Certificates, odabrati Import

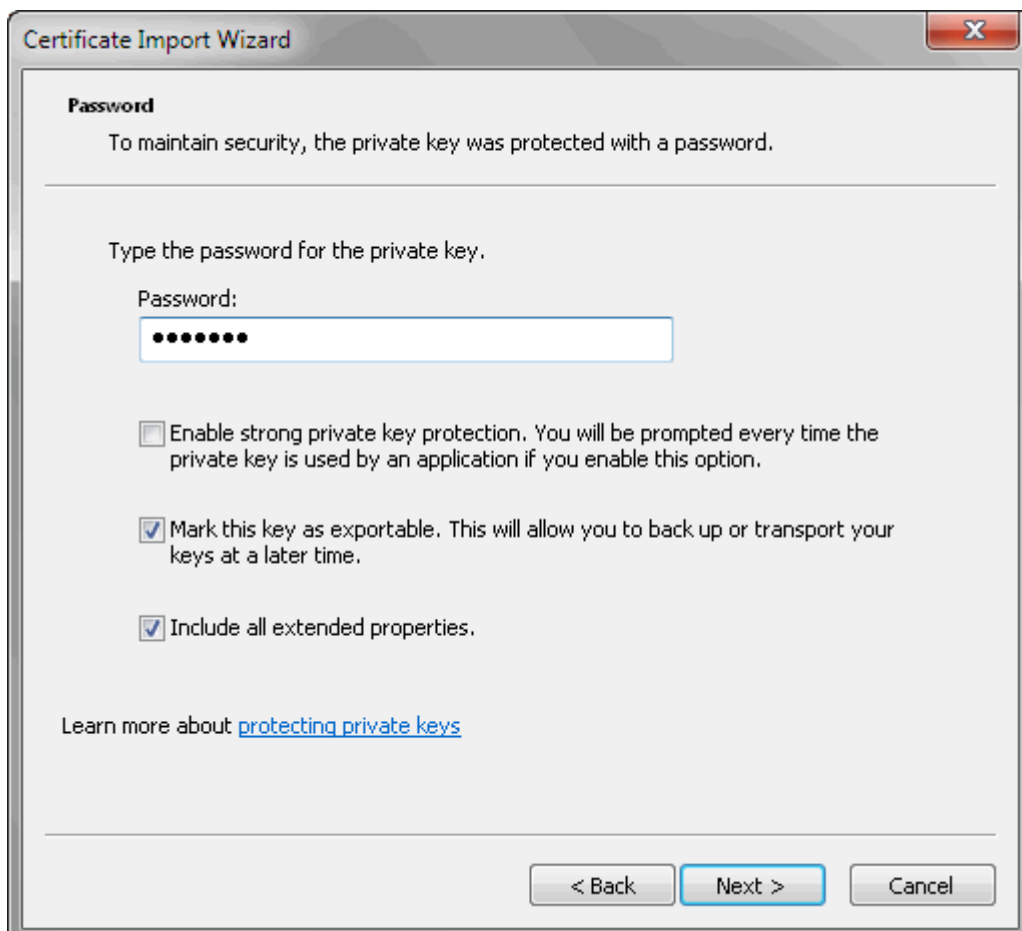
Slijediti upute kako je prikazano na slikama

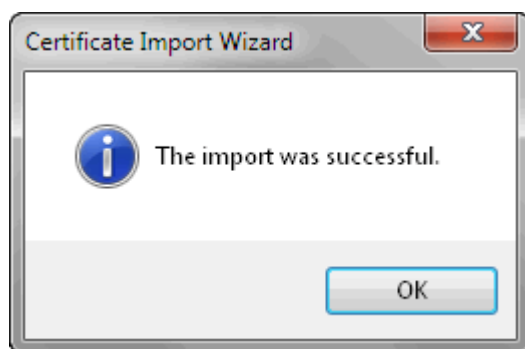
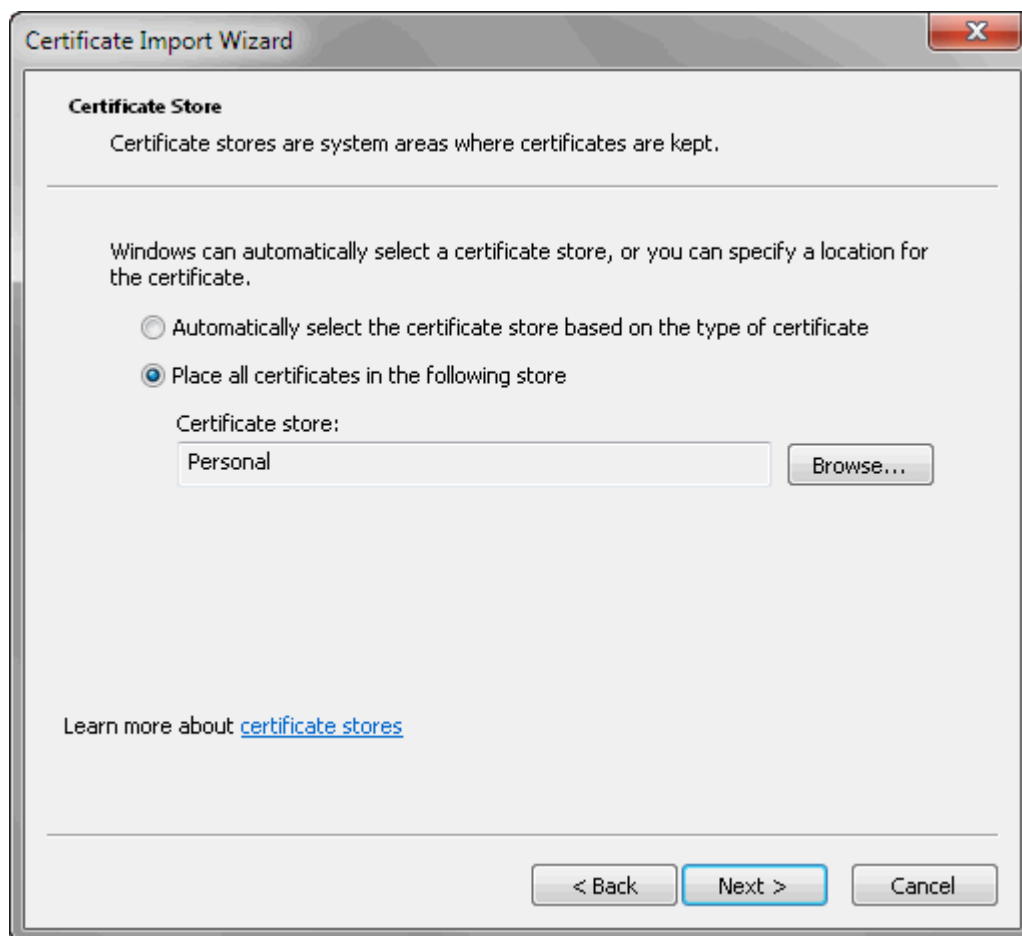


Odabрати preuzeti certifikat



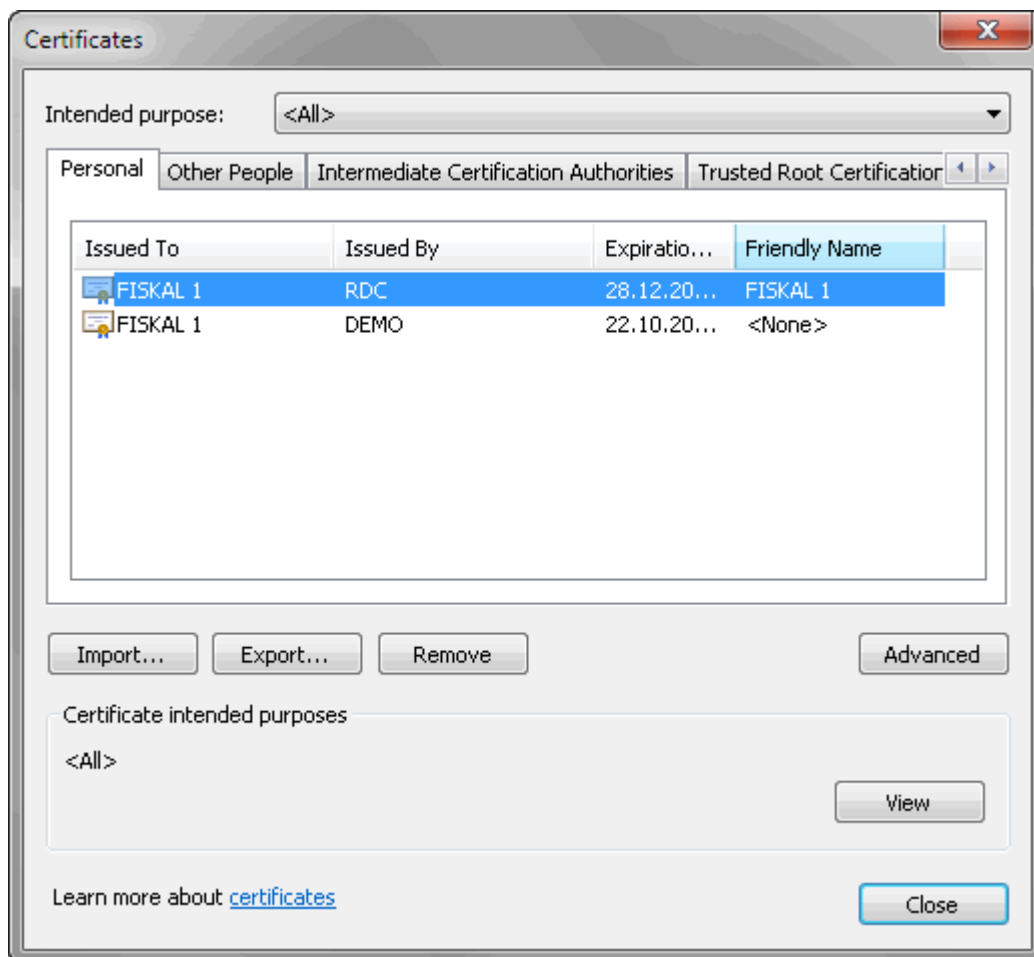
Upisati password koji ste unjeli prilikom preuzimanja certifikata. Označiti kvačice kako je prikazano na slici.

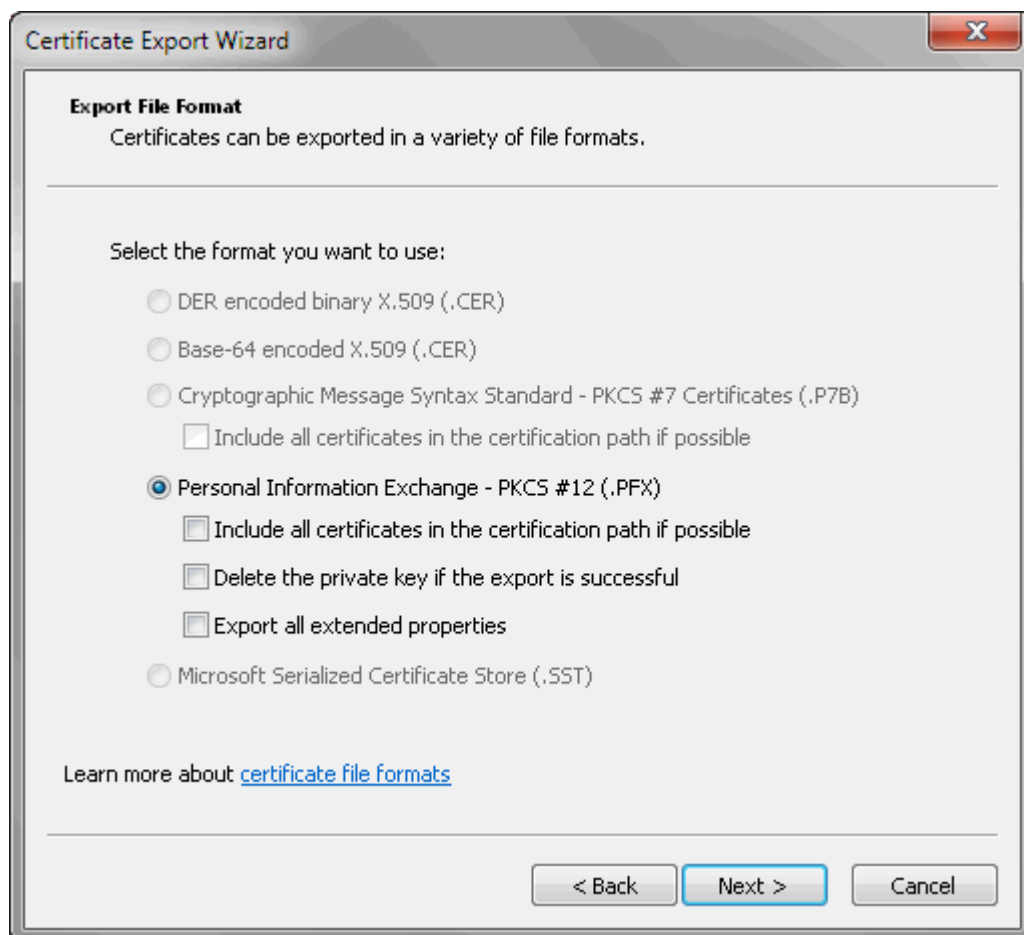
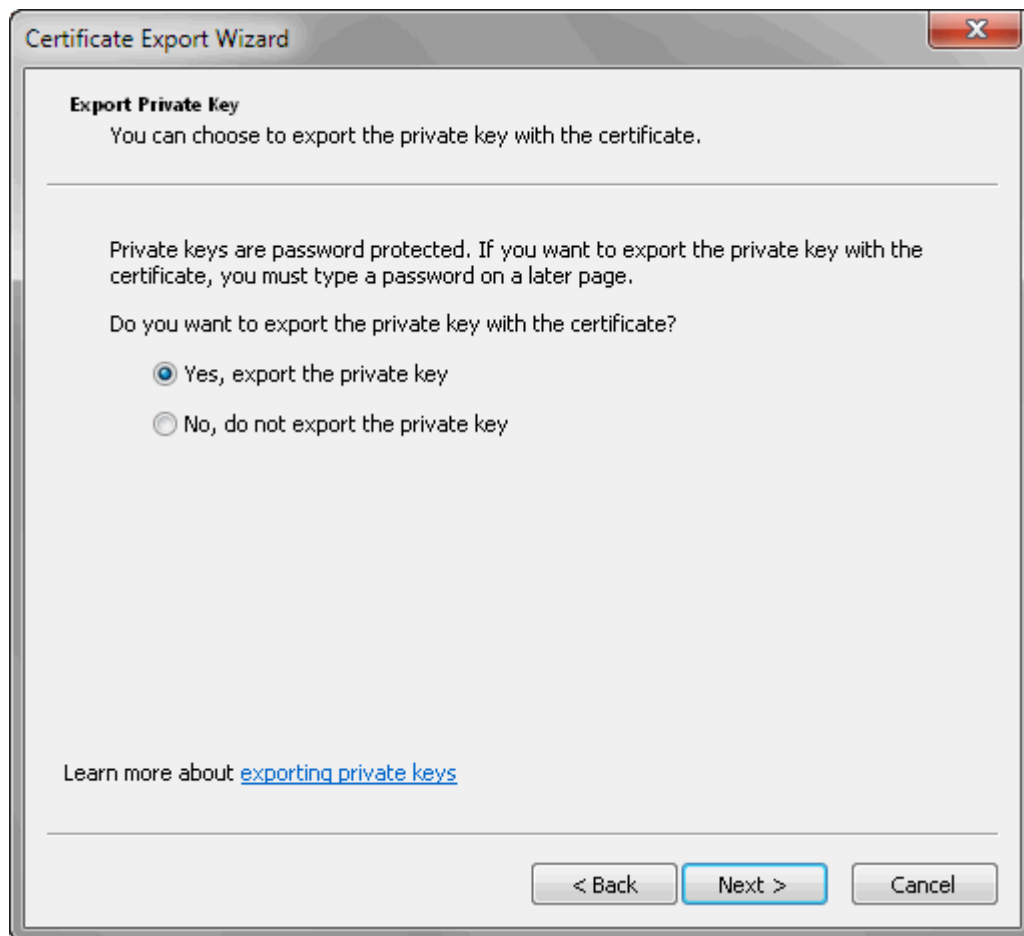


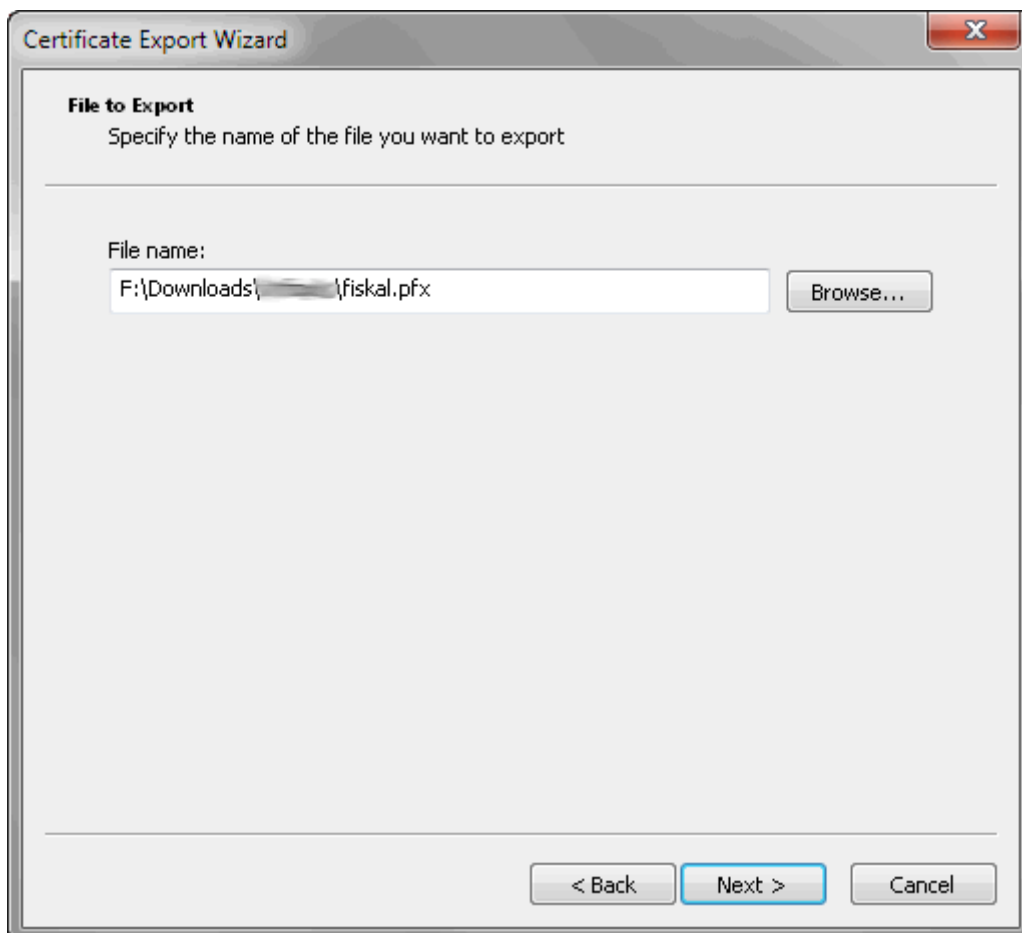
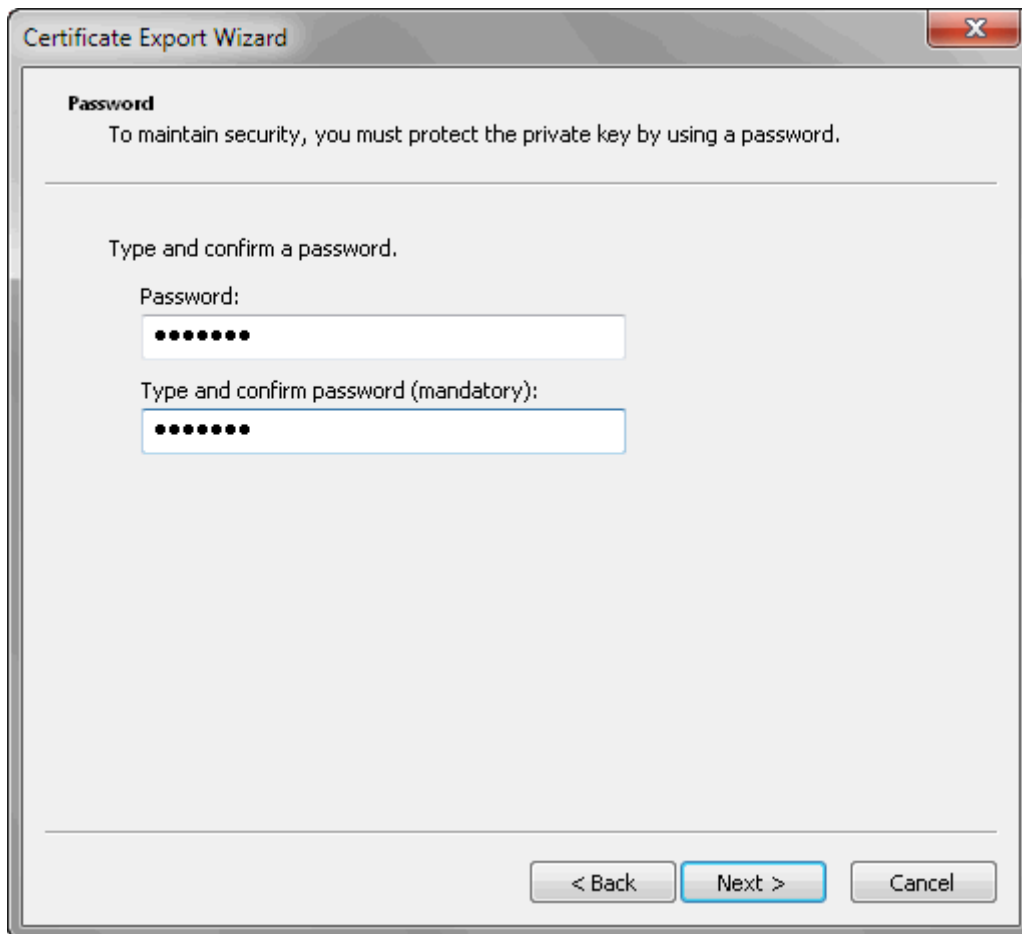


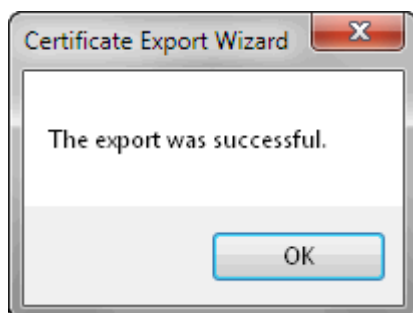
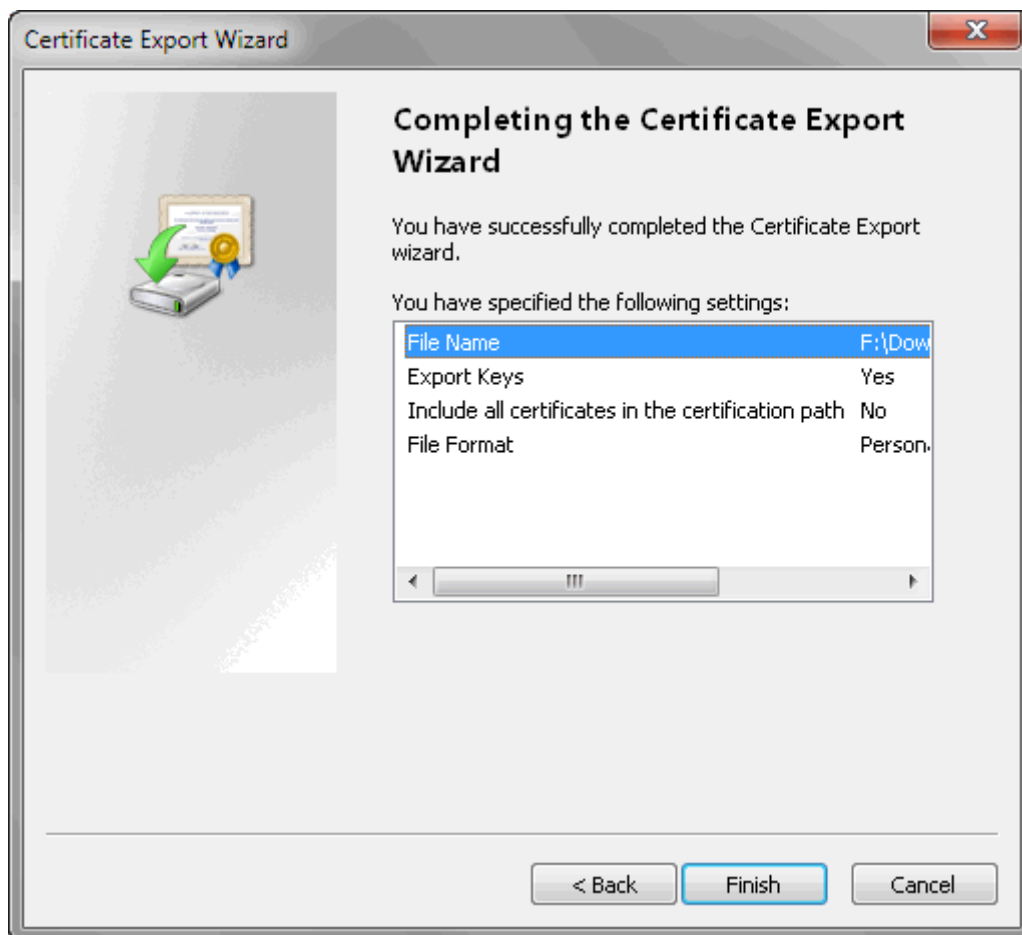
Exportiranje pfx certifikata iz Internet Explorera

Označite certifikat i odaberite export









Dcg`^YXb]`Korak!`a dcfhfUb^WfhZ_UU

WA!|*!æ ~ AÜ æd æ æ Æ OVA\ æA [\!^} ~ cÄVç[à) ä ä[à) bæ Ac`A æÄ ÈÄ[!æ ~ AÜ\ æp æææ Æ æÄ æ b`c`A } [•æ&^!cää ææÄ
ã ææ!ææÄ æÄ ææ! æÆÄ!^ãæ ~ Äææ[c\ ~ AÜ^!cää ææÄ æÄ } [•Ä Ä!|*!æ ÈÄ Ä! äæ|ææ æ[!| ~ AÜ[b`A`c`Äæ æ Ä!^ãæ æÄÄ
Ú!| çb!æÄ[d ä È